

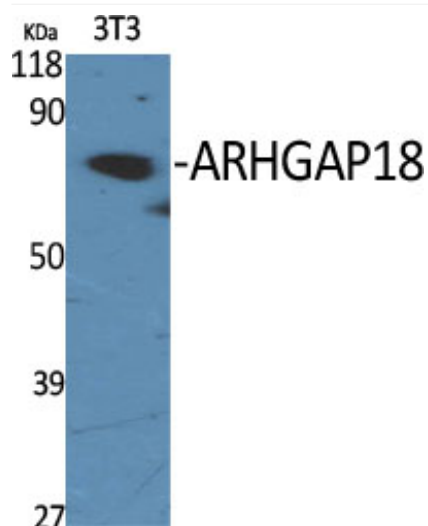


ARHGAP18 Polyclonal Antibody

Catalog No	YP-Ab-16134
Isotype	IgG
Reactivity	Human;Rat;Mouse;
Applications	WB;IHC;IF;ELISA
Gene Name	ARHGAP18
Protein Name	Rho GTPase-activating protein 18
Immunogen	The antiserum was produced against synthesized peptide derived from human RHG18. AA range:517-566
Specificity	ARHGAP18 Polyclonal Antibody detects endogenous levels of ARHGAP18 protein.
Formulation	Liquid in PBS containing 50% glycerol, 0.5% BSA and 0.02% sodium azide.
Source	Polyclonal, Rabbit,IgG
Purification	The antibody was affinity-purified from rabbit antiserum by affinity-chromatography using epitope-specific immunogen.
Dilution	WB: 1/500 - 1/2000. IHC: 1/100 - 1/300. ELISA: 1/40000.. IF 1:50-200
Concentration	1 mg/ml
Purity	≥90%
Storage Stability	-20°C/1 year
Synonyms	ARHGAP18; Rho GTPase-activating protein 18; MacGAP; Rho-type GTPase-activating protein 18
Observed Band	75kD
Cell Pathway	Cytoplasm .
Tissue Specificity	Brain,Mast cell,Melanoma,Uterus,
Function	function:GTPase activator for the Rho-type GTPases by converting them to an inactive GDP-bound state.,sequence caution:Contaminating sequence. Potential poly-A sequence.,similarity:Contains 1 Rho-GAP domain.,subunit:Interacts with MPHOSPH6.,
Background	ARHGAP18 belongs to a family of Rho (see MIM 165390) GTPase-activating proteins that modulate cell signaling (Potkin et al., 2009 [PubMed 19065146]).[supplied by OMIM, Apr 2010],
matters needing attention	Avoid repeated freezing and thawing!
Usage suggestions	This product can be used in immunological reaction related experiments. For more information, please consult technical personnel.



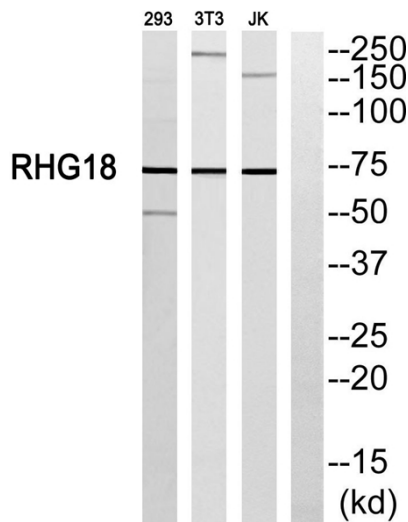
Products Images



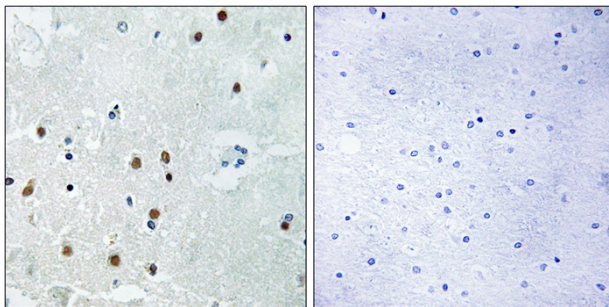
Western Blot analysis of various cells using
ARHGAP18 Polyclonal Antibody



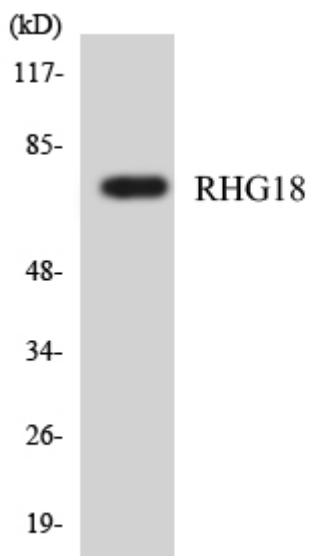
Western Blot analysis of Jurkat cells using ARHGAP18
Polyclonal Antibody



Western blot analysis of RHG18 Antibody. The lane on the right is blocked with the RHG18 peptide.



Immunohistochemistry analysis of paraffin-embedded human brain, using RHG18 Antibody. The lane on the right is blocked with the RHG18 peptide.



Western blot analysis of the lysates from HepG2 cells using RHG18 antibody.